

# Yale Model KELC Electric Hoist Cutaway

## NEW Heavy-Duty Motor Brake

AC spring set disc brake for positive braking action and long life with minimal maintenance. Easy 1-step adjustment procedure.

## Gearing

Totally enclosed, oil-bath lubricated for long life.

## High-Torque, Heavy-Duty Hoist Motor

Motors are H4 30-minute rated with class "F" insulation and include a thermal actuated switch (TAS) embedded in the motor winding for protection.

## Load Sprocket & Chain Guide

Provided with a full floating chain guide that assures proper engagement of chain on sprocket.

## Lower Block

Provided with a 360° rotating hook riding on thrust bearings. The hook is provided with a spring-loaded latch as standard.

## Push-Button Controls

Standard push-button control station is contoured for operator comfort allowing easy one-handed sure grip control and provided with a weatherproof NEMA-4X enclosure. The push-button cable is provided with built-in strain relief to help prevent cable damage.

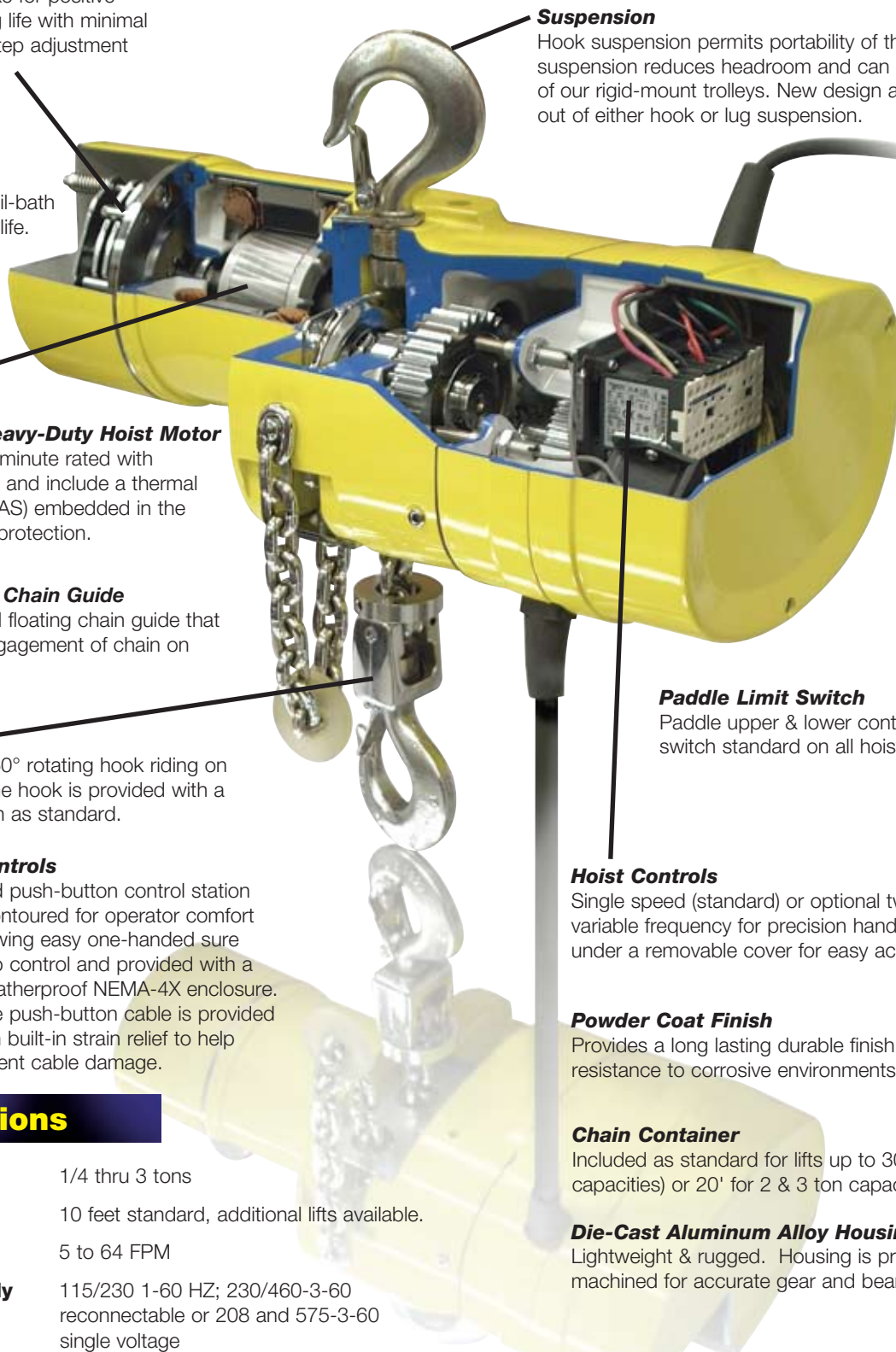


## Overload Protection

Prevents lifting loads beyond the hoist's load range, which may damage the hoist or supporting structure. Optional mechanical load brake available.

## Suspension

Hook suspension permits portability of the hoist while lug suspension reduces headroom and can be used with any of our rigid-mount trolleys. New design allows easy change out of either hook or lug suspension.



## Paddle Limit Switch

Paddle upper & lower control limit switch standard on all hoists.

## Hoist Controls

Single speed (standard) or optional two speed and variable frequency for precision handling is located under a removable cover for easy access.

## Powder Coat Finish

Provides a long lasting durable finish and added resistance to corrosive environments.

## Chain Container

Included as standard for lifts up to 30' (1/4-1 ton capacities) or 20' for 2 & 3 ton capacities.

## Die-Cast Aluminum Alloy Housing and Frame

Lightweight & rugged. Housing is precision machined for accurate gear and bearing alignment.

All hoists are built in compliance to ASME/ANSI B30.16 standards and NEC electrical codes. Yale® Model KELC electric hoists and motor-driven trolleys are CSA approved and are ISO9001 certified.

## Specifications

<b>Capacity Range</b>	1/4 thru 3 tons
<b>Lift</b>	10 feet standard, additional lifts available.
<b>Lifting Speed</b>	5 to 64 FPM
<b>AC Power Supply</b>	115/230 1-60 HZ; 230/460-3-60 reconnectable or 208 and 575-3-60 single voltage
<b>Control</b>	Push-button control voltage of 115-volts standard on all models. 24-volt control optional.
<b>Suspension</b>	Hook and Lug



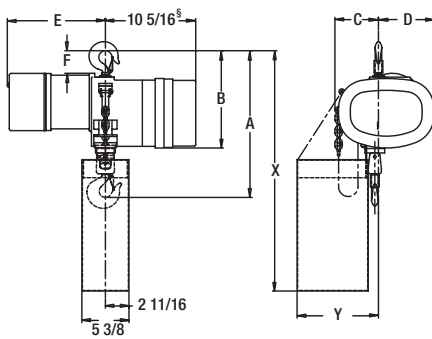


# Model KELC Hook & Lug Mounted Electric Hoists

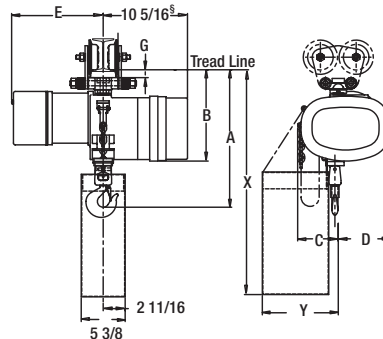


- Single speed standard. Optional 2-speed or variable frequency control available for precision load spotting.
- Heavy-duty AC spring set motor brake with easy 1-step adjustment procedure.
- Gearing totally enclosed in oil-bath lubrication for long life.
- High-torque H4 rated heavy-duty motor with Class 'F' insulation with thermal actuated switches embedded in the motor winding for protection from overheating.
- Weatherproof NEMA-4x enclosed push-button control station specially contoured for operator comfort allowing easy one-handed sure grip control.
- Paddle upper & lower hoist travel limit switch.
- Powder coat finish provides long lasting durable finish and added resistance to corrosive environments.
- Overload protection prevents lifting excessive loads.
- Choice of either hook suspension permitting portability of the hoist or lug suspension which reduces valuable headroom.
- All hoists are built in compliance to ASME/ANSI B30.16 & CSA standards, ISO certified and NEC electrical codes.

## Hook Mount



## Lug Mount



## Specifications & Dimensions

§ This dimension becomes 11-5/16" for 2 speed and 2-1/2 HP models only.

Capacity	Hoist Catalog #	Lift Speed	Motor	Parts of Chain	Net Weight	A		B		C	D	E** Max.	F	G	X***		Y
						Hook	Lug	Hook	Lug						Hook	Lug	
tons		FPM	H.P.		lbs	in	in	in	in	in	in	in	in	in	in	in	in
1/4	KELC2516	16	1/4*	1	77	16-3/4	16-13/16	11-1/8	11-3/16	5	6-5/16	14-1/4	2-9/16	15/16	27-1/2	27-5/8	9-1/2
	KELC2532	32	1/2		80												
	KELC2564	64	1		77												
1/2	KELC5016	16	1/2	1	80	16-3/4	16-13/16	11-1/8	11-3/16	5	6-5/16	14-1/4	2-9/16	15/16	27-1/2	27-5/8	9-1/2
	KELC5032	32	1		81												
1	KELC0108	8	1/2	1	88	17-1/2	17-3/8	11-7/16	11-3/8	5-1/8	6-5/16	14-1/4	2-15/16	1-1/8	27-7/8	27-3/4	9-1/2
	KELC0116	16	1		89												
	KELC0132	32	2-1/2		95												
2	KELC0204	4	1/2	2	110	23	22-1/16	13-1/8	12-3/16	6-3/8	5-1/16	14-1/4	4-9/16	1-1/16	33-1/2	32-5/8	10-3/4
	KELC0208	8	1		111												
	KELC0216	16	2-1/2		112												
3	KELC0305	5	1	3	136	25-7/8	26-5/16	14-3/8	14-7/8	7-7/8	7-1/8	14-1/4	5-7/8	2	38-7/8	39-1/4	12-1/4
	KELC0310	10	2-1/2		146												

\* Two speed hoist has a 1/2 H.P. motor

\*\* Maximum length between one & two speed model hoists. Consult factory for exact dimensions.

\*\*\* Dimensions based on lifts thru 30 ft (1/4 - 1 Ton capacities), thru 15 ft lift (2 Ton capacity) and thru 10 ft lift (3 Ton capacity)



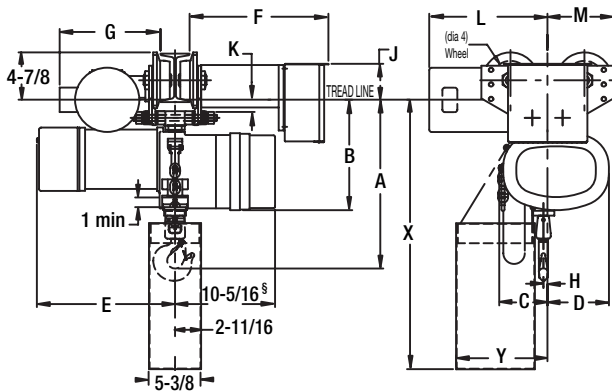
# Model KELC Lug Mounted Electric Hoists with Motor Driven Trolleys



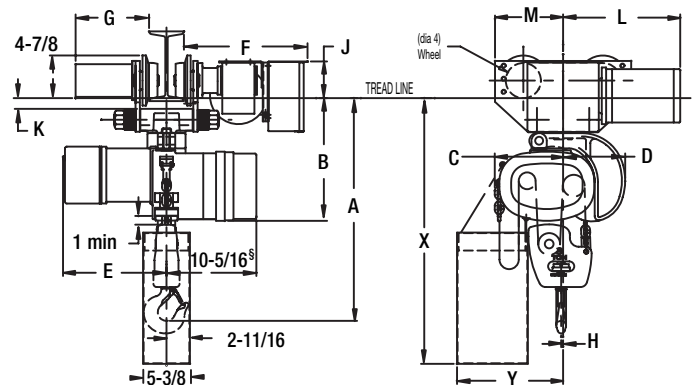
## One & Two Speed Hoists

- Single speed standard. Optional 2-speed or variable frequency control available for precision load spotting for both hoist and trolley motions.
- Heavy-duty AC spring set hoist motor brake with easy 1-step adjustment procedure.
- Trolley worm gear design provides smooth stopping performance.
- Hoist gearing totally enclosed in oil-bath lubrication for long life.
- Weatherproof NEMA-4x enclosed push-button control.
- Paddle upper & lower hoist travel limit switch.
- Hoist overload protection prevents lifting excessive loads.
- All hoists and trolleys are built in compliance to ASME/ANSI B30.16 & CSA standards, NEC electrical codes and are ISO 9001 certified.

### 1/4, 1/2, 1 & 2 Ton Trolley



### 3 Ton Trolley



## Specifications & Dimensions

§ This dimension becomes 11-5/16" for 2 speed and 2-1/2 HP models only.

Capacity	Hoist Catalog Number	Lift Speed	Motor	Parts of Chain	Net Weight	A	B	C	D	E**	F	G	J	K	L Max.	M Max.	X***	Y	H		
tons		FPM	H.P.		lbs.	in	in	in	in	in	in	in	in	in	in	in	in	in	in		
1/4	KELC2516	16	1/4*	1	162																
	KELC2532	32	1/2		165	17-1/16	10-3/16	5	6-5/16	14-1/4	14-3/8	10-3/8	3-3/4	1-3/16	12-1/4	6-13/16	27-7/8	9-1/2	7/16		
	KELC2564	64	1		164																
1/2	KELC5016	16	1/2	1	165	17-1/16	10-3/16	5	6-5/16	14-1/4	14-3/8	10-3/8	3-3/4	1-3/16	12-1/4	6-13/16	27-7/8	9-1/2	7/16		
	KELC5032	32	1		166																
	KELC0108	8	1/2		173																
1	KELC0116	16	1	1	174	17-7/16	10-3/16	5	6-5/16	14-1/4	14-5/16	10-3/8	3-11/16	1-3/16	12-1/4	6-13/16	27-7/8	9-1/2	7/16		
	KELC0132	32	2-1/2		182																
	KELC0204	4	1/2		207																
2	KELC0208	8	1	2	209	22-1/4	11-1/8	6-3/8	7-1/16	14-1/4	14-1/2	10-1/2	4-3/8	1-1/4	12-1/4	7-9/16	28-3/4	10-3/4	3/16		
	KELC0216	16	2-1/2		210																
	KELC0305	5	1		296																
3	KELC0310	10	2-1/2	304	25-9/16	12-7/8	7-7/8	7-1/8	14-1/4	14-1/4	8-1/2	4-3/16	1-1/4	13-1/2	7-13/16	30-1/2	12-1/4	7/32			

\* Two speed hoist has a 1/2 H.P. motor

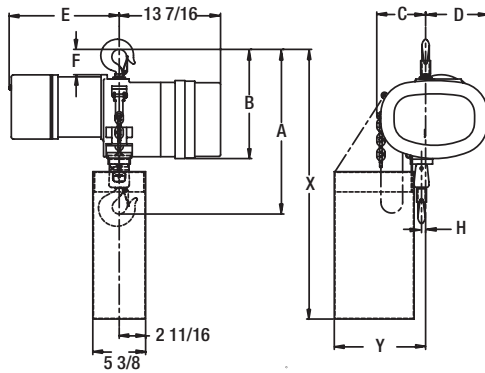
\*\* Maximum length between one & two speed model hoists. Consult factory for exact dimensions.

\*\*\* Dimensions based on lifts thru 30 ft (1/4 - 1 Ton capacities), thru 15 ft lift (2 Ton capacity) and thru 10 ft lift (3 Ton capacity)

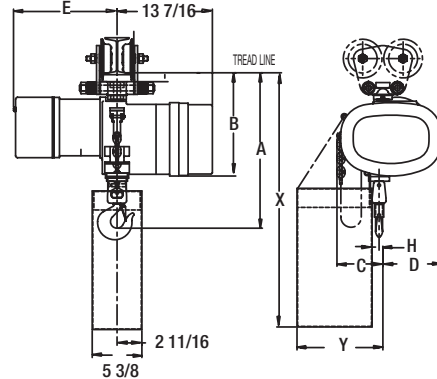


- Variable speed control with single speed motor.
- Minimizes high-starting current on motor which helps keep it cool extending life of motor and also permits increase in motor run-time and starts/stops over standard contactor control.
- Electronic reversing, multispeed operation (up to 3 steps) eliminates conventional magnetic contactors which are wearable components.
- Voltages available are 380-460/3/60, 208-230/3/60 and 208-230/1/60.
- 10:1 speed ratio permits precise positioning for load spotting.
- H4 duty rating.
- 2-step infinitely variable push-button control standard. 3-step also available.
- Thermal overload protection.
- Fault recorder helps troubleshoot various problems, such as power related issues.
- 3 programmable outputs.

### Hook Mount



### Lug Mount



## Specifications & Dimensions

Capacity	Hoist Catalog #	Lift Speed	Motor	Parts of Chain	Net Weight	A		B		C	D	E* Max.	F	G	X**		Y
						Hook	Lug	Hook	Lug						Hook	Lug	
tons		FPM	H.P.		lbs	in	in	in	in	in	in	in	in	in	in	in	in
1/4	KELC2516V	16	1/4	1	77	16-3/4	16-13/16	11-1/8	11-3/16	5	6-5/16	14-1/4	2-9/16	15/16	27-1/2	27-5/8	9-1/2
	KELC2532V	32	1/2		80												
	KELC2564V	64	1		77												
1/2	KELC5016V	16	1/2	1	80	16-3/4	16-13/16	11-1/8	11-3/16	5	6-5/16	14-1/4	2-9/16	15/16	27-1/2	27-5/8	9-1/2
	KELC5032V	32	1		81												
	KELC0108V	8	1/2		88												
1	KELC0116V	16	1	1	89	17-1/2	17-3/8	11-7/16	11-3/8	5-1/8	6-5/16	14-1/4	2-15/16	1-1/8	27-7/8	27-3/4	9-1/2
	KELC0132V	32	2-1/2		95												
	KELC0204V	4	1/2		110												
2	KELC0208V	8	1	2	111	23	22-1/16	13-1/8	12-3/16	6-3/8	5-1/16	14-1/4	4-9/16	1-1/16	33-1/2	32-5/8	10-3/4
	KELC0216V	16	2-1/2		112												
	KELC0305V	5	1		136												
3	KELC0310V	10	2-1/2	3	146	25-7/8	26-5/16	14-3/8	14-7/8	7-7/8	7-1/8	14-1/4	5-7/8	2	38-7/8	39-1/4	12-1/4

\*\* Maximum length for 3 phase model hoists. Consult factory for exact dimensions.

\*\*\* Dimensions based on lifts thru 30 ft (1/4 - 1 Ton capacities), thru 15 ft lift (2 Ton capacity) and thru 10 ft lift (3 Ton capacity)



**WEATHER RESISTANT** Weather resistant options such as water resistant covers, zinc-plated load chain, upper & lower hooks and sealing of electrical joints permit the hoist to be used for outdoor applications.



**HEAVY-DUTY RIGID MOUNT TROLLEYS FOR HEAVY-DUTY SERVICE TRAVERSE APPLICATIONS**

Designed for use specifically with YALE® lug mounted electric chain hoists. The wheels are heat treated forged steel with dual tread design for operation on either “S” or wide flange beams. Sealed precision ball bearings and heavy gauge steel side plates provide a heavy-duty unit. Optional drop lugs available.



**ELECTRONIC LIMIT SWITCH** Electronic upper & lower limit switch only requires a press of a button to set your hook travel limits.



**LUG SUSPENSION BRACKETS** Used to convert hoists from hook to lug suspensions. Must be used to accommodate rigid mount push, hand-gear and motor-driven trolleys.



**FOOD & PHARMACEUTICAL SERVICE OPTIONS** Clean hoist (no paint) or FDA approved epoxy enamel paint, stainless steel load chain, hooks & lower block, and food grade lubrication.



**PUSH-BUTTON STATION** All motions can be controlled from a convenient, easy to operate NEMA 4X push-button station. Push-button stations are available for one and two speed, or variable frequency applications.



**CABLE REELS** Spring loaded reels keep power conductor cables taut and out of the way. Suitable for use with YALE and other electric hoists and trolleys. Cable reel is stationary type with a 340° pivot base.