

# IS D 3360

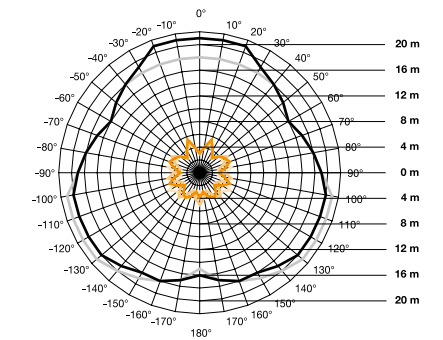
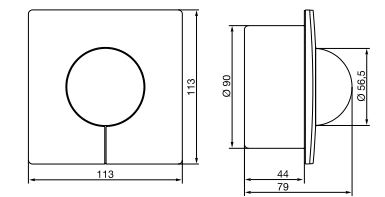
## Less is more.

### Minimum installation work - maximum reach.

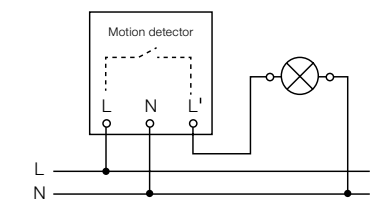
You want to equip false ceilings in large rooms with long-reach sensors? The slim-line IS D3360 infrared motion detector fits like a glove. Because with easy-to-install clamp retainer, you can integrate it in the ceiling quickly and elegantly, leaving it virtually invisible to fleeting glances. Offering a 360° angle of coverage, no movement goes unnoticed in a radius of 20 metres.



|  |  |
|--|--|
| EAN IS D 3360  | 4007841 660918                                 |
| Type   | Motion detector                                |
| Dimensions (H x W x D)   | 113 x 113 x 79 mm                              |
| Power supply   | 230 - 240 V, 50 Hz (2.5 mm <sup>2</sup> max.)  |
| Sensor type  | Passive infrared                               |
| Where to use   | Indoors  |
| Installation   | Ceiling  |
| Recommended installation height                                      | 2.50 - 5.00 m                                  |
| Output (resistive load, e.g. ordinary lamp)                          | 2000 W max.                                    |
| Output (uncorrected, inductive, cos φ = 0.5, e.g. fluorescent lamps) | 1000 VA max.                                   |
| Output (series-corrected)  | 900 W max.                                     |
| Output (parallel-corrected, with C ≤ 45.6 μF)                        | 500 W max.                                     |
| Output (electronic ballasts, capacitive, e.g. low-energy lamps)      | .8 each max., C ≤ 176 μF                       |
| Angle of coverage  | 360° with 180° angle of aperture               |
| Capability of masking out individual segments                        | Yes  |
| Reach  | 20 m max. tangentially; temperature-stabilised |
|  | + precision adjustment using shrouds           |
| Sensor system  | .11 detection levels, 1416 switching zones     |
| Response light level   | .2 - 2000 lx                                   |
| Response light level teach function                                  | Yes  |
| Time setting   | .5 sec. - 15 min.                              |
| Manual override  | Selectable, 4 h                                |
| IP rating  | IP20   |
| Protection class   | II   |
| Temperature range  | -20 - +50 °C                                   |

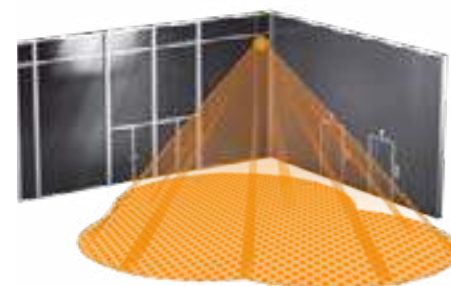


IS D 3360 detection zone  
black = tangential walking direction  
orange = radial walking direction



Also suitable for parallel operating mode.  
Intrinsic light detection.

Further circuit diagrams starting on page 328



UV-resistant plastic

