

Yale[®]
HOISTS

**POWERED HOISTS
& TROLLEYS**



THE MOST FAMOUS NAME IN HOISTS.



Yale's leadership in the hoisting industry has stood for quality for 100 years!

It all began in 1875, when Linus Yale invented the Differential Hoist launching the monorail hoist industry. Since then, the Yale company has contributed numerous advancements, as well as a continued introduction of safety-oriented accessories like the Weston Screw Load Brake, first introduced way back in 1879. Quality engineered and performance tested, Yale products, like the company itself, are built to last.

YALE ELECTRIC CHAIN HOISTS are designed for H4 duty (300 starts/hour, 30 minutes/hour on time), which meets most heavy-duty industrial applications. YALE's range of specifications and features have made it the perfect solution for thousands of hoists sold in industries such as:

- Automotive
- Fabricating Shops/Machine Shops
- Manufactured Housing
- Shipping Receiving and Warehousing
- Chemical Plants
- Lumber Mills
- Foundries and Steel Mills
- Textile
- Pulp and Paper
- Marine
- Construction
- Plastics

Yale also offers special hoists for specific industries

Food Handling and Pharmaceutical

Options include clean hoist (no paint) or FDA approved epoxy enamel paint, stainless steel lower block, hooks and chain and food grade oil for gear transmission.

Corrosion Resistant / Plating Applications

Options include zinc-plated load chain and hooks, zinc-plated or anodized lower block, motor shaft seal and sealing of electrical joints.

Explosion Proof and Spark Resistant Features

Hoist options allow for use in Class 1, Div. 2, Group C & D applications and Class 2, Div. 2, Group F & G. Options include NEMA 7 panel for Class 1, Div. 2 and NEMA 4/12 panel for Class 2, Div. 2, stainless steel load chain, hook & lower block and intrinsically safe relays.

Precision Handling

Yale offers a wide range of hoisting speeds to suit your application. Optional 2-speed control (3:1 speed ratio) or variable frequency control (10:1 speed ratio) will offer precision handling control of loads.

Outdoor Service

Weather resistant options such as zinc-plated load chain, water resistant covers and sealing of electrical joints make the hoist a good choice for use in outdoor applications.

There's a **YALE HOIST** for every job.

Think Safety, Think Yale

Standard safety features:

- Overload Clutch – prevents and protects operator, hoist and supporting structure from lifting excessive loads.
- Electronic Upper & Lower Limit Switch – Automatically shuts down power to the hoist, preventing lower block from two-blocking into hoist frame. Easy adjustment with a press of a button.
- Designed to meet ASME/ANSI B30.16, CSA, NEC electrical codes and is ISO9001 certified.

Yale Model KELC Electric Hoist Cutaway

NEW Heavy-Duty Motor Brake

AC spring set disc brake for positive braking action and long life with minimal maintenance. Easy 1-step adjustment procedure.

Gearing

Totally enclosed, oil-bath lubricated for long life.

High-Torque, Heavy-Duty Hoist Motor

Motors are H4 30-minute rated with class "F" insulation and include a thermal actuated switch (TAS) embedded in the motor winding for protection.

Load Sprocket & Chain Guide

Provided with a full floating chain guide that assures proper engagement of chain on sprocket.

Lower Block

Provided with a 360° rotating hook riding on thrust bearings. The hook is provided with a spring-loaded latch as standard.

Push-Button Controls

Standard push-button control station is contoured for operator comfort allowing easy one-handed sure grip control and provided with a weatherproof NEMA-4X enclosure. The push-button cable is provided with built-in strain relief to help prevent cable damage.



Overload Protection

Prevents lifting loads beyond the hoist's load range, which may damage the hoist or supporting structure. Optional mechanical load brake available.

Suspension

Hook suspension permits portability of the hoist while lug suspension reduces headroom and can be used with any of our rigid-mount trolleys. New design allows easy change out of either hook or lug suspension.

Paddle Limit Switch

Paddle upper & lower control limit switch standard on all hoists.

Hoist Controls

Single speed (standard) or optional two speed and variable frequency for precision handling is located under a removable cover for easy access.

Powder Coat Finish

Provides a long lasting durable finish and added resistance to corrosive environments.

Chain Container

Included as standard for lifts up to 30' (1/4-1 ton capacities) or 20' for 2 & 3 ton capacities.

Die-Cast Aluminum Alloy Housing and Frame

Lightweight & rugged. Housing is precision machined for accurate gear and bearing alignment.

All hoists are built in compliance to ASME/ANSI B30.16 standards and NEC electrical codes. Yale® Model KELC electric hoists and motor-driven trolleys are CSA approved and are ISO9001 certified.

Specifications

Capacity Range	1/4 thru 3 tons
Lift	10 feet standard, additional lifts available.
Lifting Speed	5 to 64 FPM
AC Power Supply	115/230 1-60 HZ; 230/460-3-60 reconnectable or 208 and 575-3-60 single voltage
Control	Push-button control voltage of 115-volts standard on all models. 24-volt control optional.
Suspension	Hook and Lug

Model KELC Electric Hoist Options & Accessories



WEATHER RESISTANT Weather resistant options such as water resistant covers, zinc-plated load chain, upper & lower hooks and sealing of electrical joints permit the hoist to be used for outdoor applications.



HEAVY-DUTY RIGID MOUNT TROLLEYS FOR HEAVY-DUTY SERVICE TRAVERSE APPLICATIONS

Designed for use specifically with YALE® lug mounted electric chain hoists. The wheels are heat treated forged steel with dual tread design for operation on either “S” or wide flange beams. Sealed precision ball bearings and heavy gauge steel side plates provide a heavy-duty unit. Optional drop lugs available.



ELECTRONIC LIMIT SWITCH

Electronic upper & lower limit switch only requires a press of a button to set your hook travel limits.



LUG SUSPENSION BRACKETS

Used to convert hoists from hook to lug suspensions. Must be used to accommodate rigid mount push, hand-gear and motor-driven trolleys.



FOOD & PHARMACEUTICAL SERVICE OPTIONS

Clean hoist (no paint) or FDA approved epoxy enamel paint, stainless steel load chain, hooks & lower block, and food grade lubrication.



PUSH-BUTTON STATION

All motions can be controlled from a convenient, easy to operate NEMA 4X push-button station. Push-button stations are available for one and two speed, or variable frequency applications.



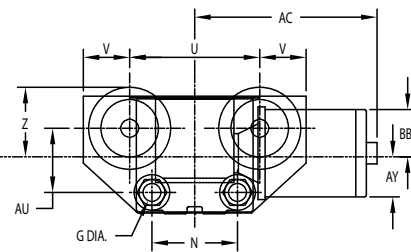
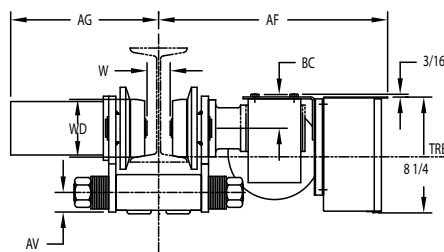
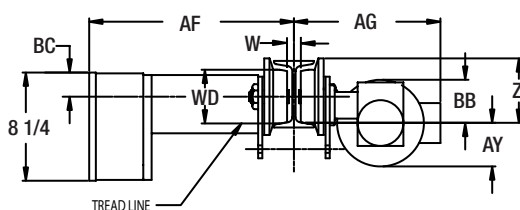
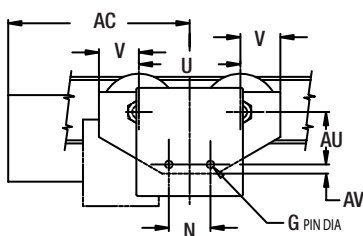
CABLE REELS

Spring loaded reels keep power conductor cables taut and out of the way. Suitable for use with YALE and other electric hoists and trolleys. Cable reel is stationary type with a 340° pivot base.



- Steel frame side plates extend beyond the wheels for end stop contacts. Side plates have tapped holes for collector bracket attachment. Optional drop stops and bumpers.
- Wheels are forged heat-treated steel with contour tread for use on American Standard I-beam or wide flange beams.
- Traverse motor is 30-minute rated, totally enclosed non-ventilated with class "F" insulation with thermal switches as standard to protect the motor from over-heating.
- Traverse gearing is housed in a heavy duty right angle drive reducer with output pinion meshing with machine cut wheel gears.
- Trolley controls are housed in a NEMA 1 enclosed panel mounted on the trolley side for easy access. The controls include a reversing contractor, terminal strip and NEMA 4X pendant station with hoist and trolley push-button controls as standard.

1/4-1 & 2 ton



Specifications & Dimensions

Capacity	Model #	Standard Width Adjustment	Optional Flange Extended Adjustment		Trolley Speed	Optional Standard Speeds	Special Speed	Motor
			1st Extension	2nd Extension				
tons		in	in	in	FPM	FPM	FPM	HP
1/4 to 1	MDT01	3 to 5	5-1/8 to 7-1/4	7-1/2 to 9-1/8	75	50 & 100	25, 150	1/4
2	MDT02	3-5/8 to 6	6-1/4 to 8-5/8	8-7/8 to 11-1/4	60	40 & 80	30, 120	1/4
3	MDT03	4 to 6-1/4	6-3/8 to 8-5/8	8-3/4 to 11	50	75 & 100	25, 125	1/4

Capacity	Model #	AC	AF Max	AG Max	AU	AV	AY	BB Max	BC	G Dia	N	U	V	W Max	Z	WD	Min Radius
tons		in	in	in	in	in	in	in	in	in	in	in	in	in	in	in	in
1/4 to 1	MDT01	12	16-7/8	12-1/2	3-7/8	3/4	2-9/16	3-1/8	1-13/16	5/8	3-1/8	7-3/4	3	2-1/2	4-7/8	4	3
2	MDT02	12	16-7/8	12-1/2	4-1/8	1-15/16	1-15/16	2-1/16	2-7/16	1	5	9-1/8	3	2-1/4	4-7/8	4	5
3	MDT03	12-13/16	17-3/16	11-1/2	4-1/2	1-3/8	-	-	2-1/8	1-1/4	6	9-1/8	3-1/4	2-1/2	4-7/8	4	5

3 ton Motor Driven Trolley

Always specify voltage when ordering. Voltages available: 115/230-1-60, 208-230/460-3-60, 575-3-60
 115/230-1-60 is not available on trolleys for two speed hoists or two speed trolley.
 Two speed trolleys have a 3:1 speed ratio. Standard pendant drop from trolley is 7 feet. Longer cables are available.
 Trolleys are equipped with 3-foot length power supply cable. Longer lengths are available.