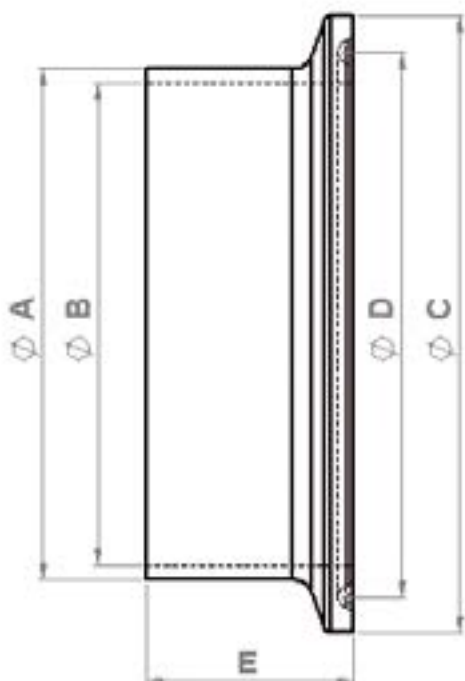


## Ferrules DIN32676 sched. A, Short (KK)

Material: AISI 316L (equiv. 1.4404), Surfaces according to Hygiene Class H3

3.1 Certificate (free of charge as download)



sched. A DN Metric	Tube OD A	Tube ID B	Flange OD C	Groove D	Short (KK) E	Item-No.
DN06	8,0	6,0	25,0	20,2	12,7	411980
DN08	10,0	8,0	25,0	20,2	12,7	411990
DN10	13,0	10,0	34,0	27,5	18,0	412001
DN15	19,0	16,0	34,0	27,5	18,0	412051
DN15	19,0	16,0	50,5	43,5	18,0	412060
DN20	23,0	20,0	34,0	27,5	18,0	412101
DN25	29,0	26,0	50,5	43,5	21,5	412151
DN32	35,0	32,0	50,5	43,5	21,5	412201
DN40	41,0	38,0	50,5	43,5	21,5	412251
DN50	53,0	50,0	64,0	56,5	21,5	412301
DN65	70,0	66,0	91,0	83,5	28,0	412350
DN80	85,0	81,0	106,0	97,0	28,0	412400
DN100	104,0	100,0	119,0	110,0	28,0	412450
DN125	129,0	125,0	155,0	146,0	28,0	412500
DN150	154,0	150,0	183,0	174,0	28,0	412550
DN200	204,0	200,0	233,5	225,0	28,0	412600