



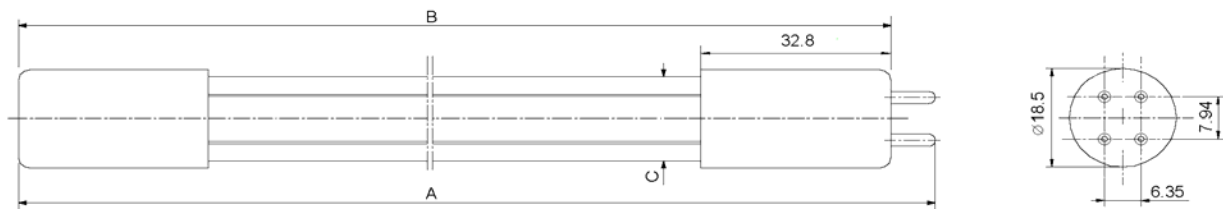
Germicidal Lamp Data Sheet
GPH846T5L/4

LightTech Lamp Technology Ltd.
 H-2120 Dunakeszi Hegyregj r  u.1.
 Tel:+36 /27/541-800 Fax:+36 /27/390-099
 info@lighttech.hu
 www.lighttech.hu

Dimensions

- A - Base face to opposite pin length**
- B - Base face to base face length**
- C - Diameter**

854 mm
846±2 mm
15 mm



Electrical Data *(nominal values)*

- Lamp Wattage**
- Lamp Current**
- Lamp Voltage at High Frequency**

41 W
425 mA
98 V

Physical Data

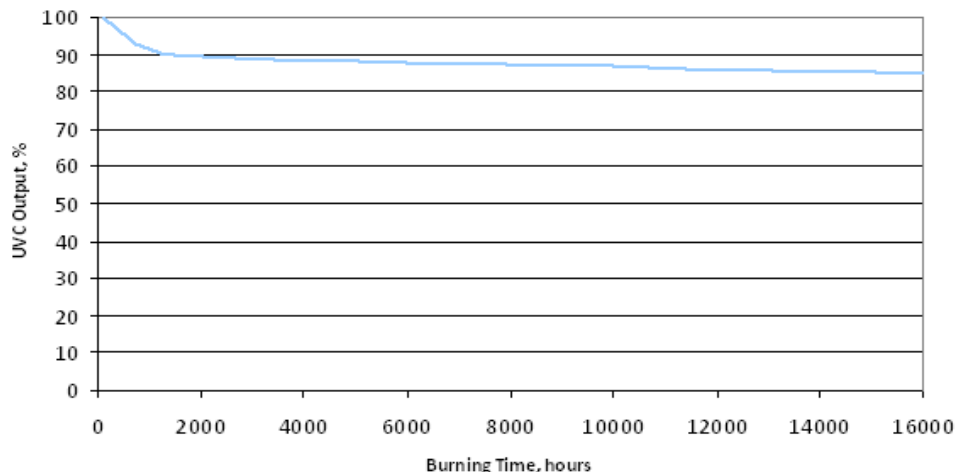
- UV Output 253.7nm (100hr)**
- Intensity @ 1m**
- Rated Average Life ***

16 W
150 µW/cm²
16000 hrs

*Average rated life when operated on an electronic high-frequency ballast

Maintenance curve

The useful life is determined on the operation condition of the lamp (for example type of ballast, ignitor used, cooling conditions, on/off cycle, etc.)



Note: Performance data are valid under laboratory conditions. The rights are reserved to change the data.