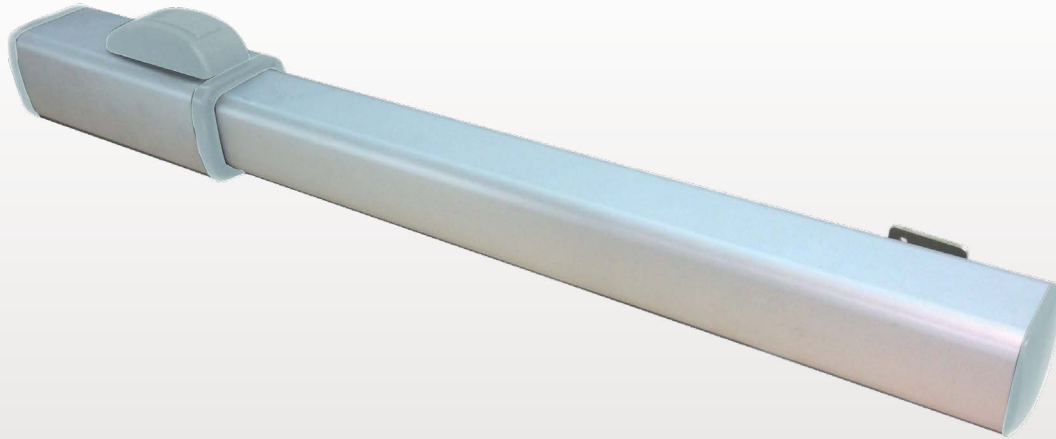




044

EXTERNAL CLOSING SYSTEMS



# TWENTY 270



Hydraulic swing gate operators. For condominium and intensive use.

## TECHNICAL DATA

## TWENTY 270

MAIN POWER SUPPLY	230 V - 50 Hz
ABSORBED POWER	250 W
MAX. WING WIDTH WITHOUT ELECTRIC LOCK	1.8 m
MAX. WING WIDTH WITH ELECTRIC LOCK	3 m
MAX. CYCLE NUMBER	800 cycles/day
PROTECTION DEGREE	IP55
MAX. THRUST FORCE	5500N
VERSIONS	B - C - SF
SLOWDOWN ON CLOSING	Yes (electronically adjustable)
SLOWDOWN ON CLOSING AND OPENING	NO
LINEAR SPEED	1.3 cm/s
OPERATING TEMPERATURE	-20° +70° C
ROD STROKE	270 mm
WEIGHT OPERATOR	9.8 kg



UNIBALL MOUNT



Simple and linear design with a compatible aesthetics for all types of gates.

The slowing down system in the closing (adjustable by control unit) allows a soft approach of the wings, silently and without mechanical stress to the structure; The slowing down can be electronically adjustable.

It equipped with front hitch ball joint uniball threaded 20mm, like the previous range ZT4-ZT44, which allows to retrieve any tolerances during the fixing.

#### IDEAL INSTALLATION

ITEM NUMBER	DESCRIPTION		SINGLE WING	DOUBLE WING
41012/001	TWENTY (choose the version in the list of available models)		1	2
41605/802	ESB 433- 433.92MHz swing gate Elettrosset	<b>Item numbers included in the Elettrosset</b>	1	1
	BA230 electronic control unit with 433MHz built-in radio receiver	41628/001		
	433.92MHz antenna kit	41929/003		
	Two TM4 - 433.92MHz four-channel Transmitters	41905/004		
	ET2N 24V led flashing light	41840/006		
	ER12-24V - Pair of photocells	41812/008		
	PC12E - Wall-mounted key-operated switch	41830/007		
	Signal panel			

ITEM NUMBER	DESCRIPTION	Max.wing width without electric lock	Max.wing width with electric lock
41012/001	TWENTY 270 B Hydraulic operator - locks on opening and closing	1.8 m	3 m
41012/002	TWENTY 270 C Hydraulic operator - locks on closing	1.8 m	3 m
41012/003	TWENTY 270 SF Hydraulic operator - without lock	-	3 m
41628/001	BA230 electronic control unit with 433MHz built-in radio receiver		

The slowing down opening and closing, is adjustable on all operators by control unit. SF versions, without hydraulic lock, always require the use of the electric lock.

NOTE: For the available safety and signalling devices and for installation accessories, see section "Control units and indicators" in this catalogue (refer to the initial index).

NOTE: All prices are subject to variation.