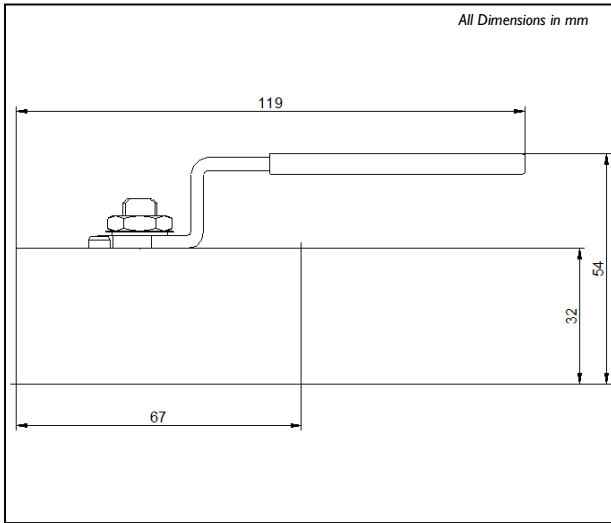


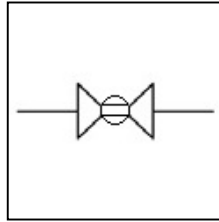
BV01



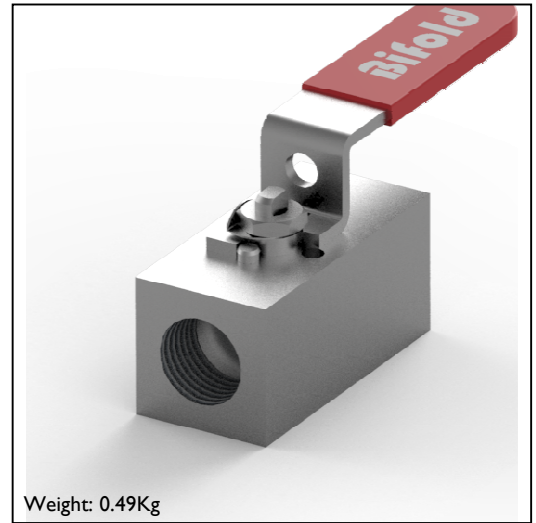
Dimensional Drawing



Schematic



Rendering



BV0108F02I0ERV6K

|                                |   |                           |
|--------------------------------|---|---------------------------|
| <b>BV01</b>                    | Single Isolation Ball Valve                       | <b>Model Code</b>         |
| <b>08</b>                      | 1/2"  | <b>Nominal Pipe Size</b>  |
| <b>F</b>                       | Female Thread NPT                                 | <b>Connection Type</b>    |
| <b>02</b>                      | UNS S31600 / S31603 Stainless Steel               | <b>Material</b>           |
| <b>10</b>                      | 10mm Bore   | <b>Bore Size</b>          |
| <b>E</b>                       | PEEK  | <b>Seat Material</b>      |
| <b>RV</b>                      | RTFE / Viton Elastomer                            | <b>Seal Stem and Body</b> |
| <b>6K</b>                      | 6,000 psi / 414 bar Maximum Cold Working Pressure | <b>Pressure Rating</b>    |
|                                | Standard Handle                                   | <b>Handle</b>             |
|                                | Pipe Mount  | <b>Mounting</b>           |
|                                | Standard FAT                                      | <b>FAT</b>                |
| <b>BV01 08 F 02 10 E RV 6K</b> |   | <b>Model Number</b>       |

This is a bespoke datasheet. For further details on the complete range, please refer to catalogue: Instrumentation Products Ball and Needle Valves

This valve is supplied to product revision 3 PR0032 21/09/2015  
Details of the product revision are available on request.

**Accuracy of information**  
We take care to ensure that product information in this catalogue is reasonably accurate and up-to-date. However, our products are continually developed and updated so to ensure accurate and up-to-date information please refer to the product catalogue issue list on our web site or contact a member of our sales team.

When selecting a product, the applicable operating system design must be considered to ensure safe use. The products function, material compatibility, adequate ratings, correct installation, operation and maintenance are the responsibilities of the system designer and user.

**Quality Assurance**  
All Bifold products are manufactured to a most stringent QA programme to ensure that every product will give optimum performance and reliability. We are third party certified to BS EN ISO 9001:2008. Functional test certificates, letter of conformity and copies of original mill certificates, providing total traceability are available on request, to BS EN 10204 3.1 where available. We reserve the right to make changes to the specifications and design etc., without prior notice.